

Congratulations to Innocom for achieving Singapore SME500 award

VOL 2, AUG-SEPT 2007 ISSUE
(CHERRIE/MARKETING DEPARTMENT)

lenovo



SPECIAL GCA OFFER!

Get the best deals on ThinkPads and other Lenovo notebooks for your business today!

Enjoy exclusive discounts on Lenovo notebooks, and get a 10-in-1 travel kit worth SGD \$129*.



ThinkPad T61

Coollest, Quietest and Strongest ThinkPad

- Intel Core 2 Duo T7300
- Intel GM965 Chipset
- 1 GB DDR2 SDRAM
- 120 GB SATA HDD
- Dual Layer Multiburner Drive (DVDRW)
- Intel® Graphics Media Accelerator X3100
- 3 yrs international carry-in warranty

SGD \$2499 ~~\$100 cash off!~~
(76601A)



ThinkPad X61

Lightest ThinkPad Ever

SGD \$2899 ~~\$100 cash off!~~
(7673A22)



Lenovo 3000 N200

Sleek Feature-Rich Widescreen Notebook

SGD \$1869 ~~\$30 cash off!~~
(068752A)



Lenovo 3000 V200

Lightest Widescreen Notebook

SGD \$1969 ~~\$30 cash off!~~
(076447A)



ThinkCentre

Performance @ Great Value

SGD \$1399 ~~\$50 cash off!~~
(9265BQ1)

Contact Details

Innocom Technology Pte Ltd: Order today, please call +65 67495022, Please quote "GCA Offer".

Terms & Conditions apply

- While stocks last.
- 10-in-1 travel kit is only for 1st 30 customers.
- Cash off is for purchases made from 6-9 Sep. It does not include any installation or downgrade charges.

Exhibition

GCA Games Convention Asia 2007

International Exhibition for Interactive Entertainment, Infotainment, Edutainment, Hardware & Technology

Date:

September 6th to 9th, 2007

Venue:

SUNTEC Singapore International Convention & Exhibition Centre

Opening hours:

Thursday, September 6th, 2007, 10am-6pm (media and trade only)

Friday, September 7th, 2007, 10am-6pm

Saturday, September 8th, 2007, 10am-7pm

Sunday, September 9th, 2007, 10am-6pm

Product ranges:

Game Consoles and Platforms

Game Peripherals

Game-Related Computer Products, Services and Technologies

Game Accessories

Mobile Gaming Hardware and Software

Online-Gaming Software, Services and Technologies

Entertainment and Edutainment Software

Computer Hardware and Equipment for Animation Technology

Animation Software

Wireless/Mobile/Handheld Software, Services and Technologies

Disclaimer: The information contained in this email including any attachments, may contain confidential information on Innocom Technologies Pte Ltd and Innocom Consultants Pte. Ltd. This email is intended for the use of the addressee/s listed above. Unauthorized review, dissemination, or any other use of the information contained in this email is strictly prohibited. If you have received this email in error or have reason to believe that you are not authorized to receive it, please notify the sender by return e-mail and promptly delete this email. Thank You.

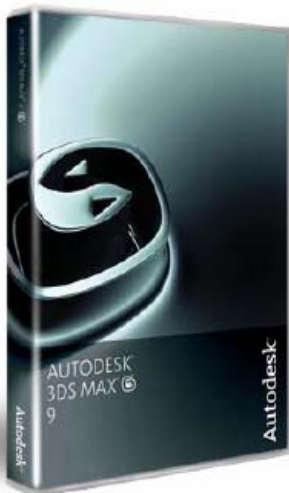
ARE YOU READY FOR THE NEW 2008 RELEASE? SEE OVER LEAF...

INNOCOM PROMOTIONS

3DS MAX 9 BUNDLE

4 DAYS ESSENTIALS TRAINING (CERTIFIED)

(INNOCOM—AUTHORISED AUTODESK TRAINING CENTRE WITH CERTIFIED INSTRUCTORS)



AUTODESK 3DS MAX 9 WITH CD-MEDIA

~~S\$5,300.00*~~

WITH LIFETIME PHONE/EMAIL SUPPORT

WITH DELIVERY AND INSTALLATION

WITH 4 DAYS ESSENTIALS TRAINING FOR 1 PAX

**NOW FOR
ONLY S\$5000**

*Prices are before GST and subject to changes without prior notice.

*Please call us for more information on the terms and conditions.

*Cash on delivery.

For more information, please contact:

ALEX at 8100 3853 or **TANY** at 9855 1770

Fax your order at (65) 6749 5531

Email: alex@innocom.com.sg; tany@innocom.com.sg

Order Form

Ref: Cherrie/3DSMAX9/030407

I wish to confirm the order of **Autodesk 3DS MAX 9 WITH 4 DAYS ESSENTIALS TRAINING FOR 1 PAX** FOR S\$5,300.00 BEFORE GST.

I am also interested in getting other/standalone software products. Please indicate:

Name _____ Position _____ Company _____

Address _____

Tel _____ Fax _____ Email _____

Signature _____ Company Stamp _____

Disclaimer: The information contained in this email including any attachments, may contain confidential information on Innocom Technologies Pte Ltd and Innocom Consultants Pte. Ltd. This email is intended for the use of the addressee/s listed above. Unauthorized review, dissemination, or any other use of the information contained in this email is strictly prohibited. If you have received this email in error or have reason to believe that you are not authorized to receive it, please notify the sender by return e-mail and promptly delete this email. Thank You.

ARE YOU READY FOR THE NEW 2008 RELEASE? SEE OVER LEAF...

INNOCOM PROMOTIONS

SIGN UP

AND

GET 5 HOURS ON-SITE CAD SUPPORT

*TERMS AND CONDITIONS APPLY.

- AutoCAD LT
 - ESSENTIALS LEVEL (3 days)
- AutoCAD
 - ESSENTIALS LEVEL (3 days)
 - ADVANCED LEVEL (2 days)
 - 3D MODELLING LEVEL (2 days)
- Autodesk 3DS Max
 - ESSENTIALS LEVEL (4 days)
 - ADVANCED—LIGHTING LEVEL (2 days)
 - ADVANCED—CHARACTER DESIGN & ANIMATION (2 days)
- AutoCAD INVENTOR
 - INVENTOR SERIES (4 days)
 - INVENTOR ADVANCED (5 days)
 - INVENTOR PROFESSIONAL (6 days)
 - VAULT & PRODUCT STREAM (4 days)
- AutoCAD MECHANICAL
 - ESSENTIALS LEVEL (3 days)
- AutoCAD ELECTRICAL
 - ESSENTIALS LEVEL (3 days)
- Autodesk VIZ
 - ESSENTIALS LEVEL (3 days)
 - ADVANCED LEVEL (2 days)
- Autodesk RASTER DESIGN
 - ESSENTIALS LEVEL (2 days)
- Autodesk CIVIL 3D
 - ESSENTIALS LEVEL (3 days)
- Autodesk MAP 3D
 - ESSENTIALS LEVEL (3 days)
- Autodesk COMBUSTION
 - ESSENTIALS LEVEL (4 days)
- Autodesk REVIT
 - ESSENTIALS LEVEL (3 days)
 - ADVANCED LEVEL (2 days)
- ARCHITECTURAL DESKTOP
 - ESSENTIALS LEVEL (3 days)

 Approved Instructor  Authorised System Centre  Authorised Training Centre

SIGN UP FORM

(TICK YOUR CHOICE ON THE LIST)

NAME:	_____
COMPANY NAME:	_____
CONTACT NO.	_____
EMAIL ADDRESS:	_____
FAX NO.	_____
COMPANY ADDRESS:	_____
COMPANY STAMP:	_____

For more information, contact Lynn Tay:

OFFICE: 6749-5022 ext. 211
MOBILE: 8288-1402
EMAIL: lynn@innocom.com.sg

For seminar / workshop inquiries, contact Jane Lim:

OFFICE: 6749-5022 ext. 214
EMAIL: jane@innocom.com.sg

Disclaimer: The information contained in this email including any attachments, may contain confidential information on Innocom Technologies Pte Ltd and Innocom Consultants Pte. Ltd. This email is intended for the use of the addressee/s listed above. Unauthorized review, dissemination, or any other use of the information contained in this email is strictly prohibited. If you have received this email in error or have reason to believe that you are not authorized to receive it, please notify the sender by return e-mail and promptly delete this email. Thank You.

ARE YOU READY FOR THE NEW 2008 RELEASE? SEE OVER LEAF...

3DS MAX 9: FREQUENTLY ASKED QUESTIONS

Q Which file formats are supported in Autodesk 3ds max?

A 3ds max 9 supports the following formats of graphic files:

Scene import formats:

3DS, AI, DDF, DEM, DWG, DXF, HTR, IAM, IGES, IPT, LP, LS, MTL, OBJ, PRJ, SHP, STL, TRC, VW, WRL, WRZ

Scene export formats:

3DS, AI, ASE, ATR, BLK, DF, DWF, DWG, DXF, HTR, IGES, LAY, LP, M3G, MTL, OBJ, STL, VW, WRL

Texture import formats (raster):

AVI, BMP, CIN, CWS, DDS, EXR, GIF, HDR, ICB, IFL, JPEG, MPEG, MOV, PIC, PNG, PSD, RGB, RLA, RPF, SGI, TGA, TIF, VDA, VST, YUV

Bitmap export formats (raster):

AVI, BMP, CIN, DDS, EPS, EXR, HDR, ICB, JPEG, MOV, PIC, PNG, PS, RGB, RLA, RPF, SGI, TGS, TIF, VDA, VST, VUE

Other formats are supported through external plug-in modules.

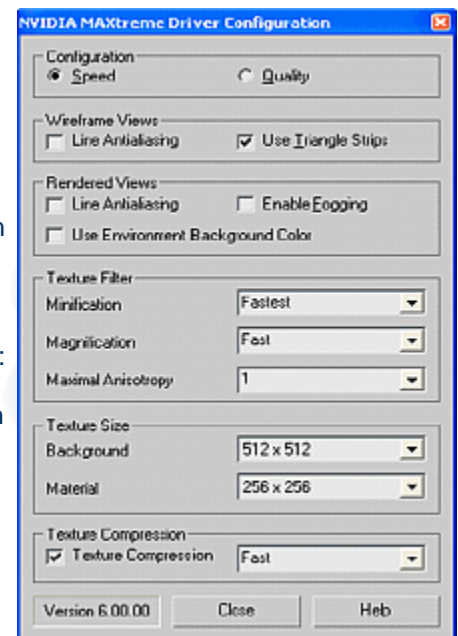
Q Make your 3ds max about 74% (up to 134%) faster!

A If you are using 3ds max 6 or 3ds max 7 on a workstation with NVIDIA Quadro graphics card, you can substantially increase its speed by employing full acceleration power of your graphics card.

The accelerator (driver) nVidia MAXtreme (free from NVidia, see download link on www.xanadu.cz/download) is in benchmark tests 74% (up to 134%) faster than the default OpenGL driver.

You can adjust quality and speed parameters using the MAXtreme driver settings:

You can find substantial performance gains also in 3ds max 9 and 3ds max 8 with MAXtreme on nVidia FX Quadro.



Disclaimer: The information contained in this email including any attachments, may contain confidential information on Innocom Technologies Pte Ltd and Innocom Consultants Pte. Ltd. This email is intended for the use of the addressee/s listed above. Unauthorized review, dissemination, or any other use of the information contained in this email is strictly prohibited. If you have received this email in error or have reason to believe that you are not authorized to receive it, please notify the sender by return e-mail and promptly delete this email. Thank You.

ARE YOU READY FOR THE NEW 2008 RELEASE? SEE OVER LEAF...

INNOCOM E-NEWSLETTER

Congratulations to Innocom for achieving Singapore SME500 award

VOL 2, AUG-SEPT 2007 ISSUE
(CHERRIE/MARKETING DEPARTMENT)

INNOCOM SEMINAR / WORKSHOP

By INNOCOM TECHNOLOGIES PTE LTD & INNOCOM CONSULTANTS PTE. LTD.

IT'S FREE SIGN UP NOW!

AUGUST SCHEDULE

3 AUG 2007	FRIDAY
AUTOCAD LT (SEMINAR)	0900-1200
3DS MAX (SEMINAR)	0900-1200
AUTOCAD (WORKSHOP)	1400-1700
10 AUG 2007	FRIDAY
MECHANICAL (SEMINAR)	0900-1200
INVENTOR (WORKSHOP)	1400-1700
17 AUG 2007	FRIDAY
AUTOCAD LT (SEMINAR)	0900-1200
ELECTRICAL (WORKSHOP)	0900-1200
AUTOCAD (WORKSHOP)	1400-1700
24 AUG 2007	FRIDAY
CIVIL 3D (SEMINAR)	0900-1200
AUTOCAD LT (SEMINAR)	0900-1200
AUTOCAD (WORKSHOP)	1400-1700
MAP 3D (SEMINAR)	1400-1700

SEPTEMBER SCHEDULE

07 SEPTEMBER 2007	FRIDAY
AutoCAD LT (SEMINAR)	0900-1200
AUTOCAD (WORKSHOP)	1400-1700
14 SEPTEMBER 2007	FRIDAY
ELECTRICAL (WORKSHOP)	0900-1200 FULLY BOOKED
MECHANICAL (SEMINAR)	0900-1200 FULLY BOOKED
INVENTOR (WORKSHOP)	1400-1700 FULLY BOOKED
21 SEPTEMBER 2007	FRIDAY
3D MAX (SEMINAR)	0900-1200
AUTOCAD LT (SEMINAR)	0900-1200
AUTOCAD (WORKSHOP)	1400-1700
28 SEPTEMBER 2007	FRIDAY
AUTOCAD LT (SEMINAR)	0900-1200
CIVIL 3D (SEMINAR)	0900-1200
AUTOCAD (WORKSHOP)	1400-1700
MAP 3D (SEMINAR)	1400-1700

OCTOBER SCHEDULE

05 OCTOBER 2007	FRIDAY
AUTOCAD LT (SEMINAR)	0900-1200
AUTOCAD (WORKSHOP)	1400-1700
12 OCTOBER 2007	FRIDAY
ELECTRICAL (WORKSHOP)	0900-1200
MECHANICAL (SEMINAR)	0900-1200
INVENTOR (WORKSHOP)	1400-1700
19 OCTOBER 2007	FRIDAY
3D MAX (SEMINAR)	0900-1200
AUTOCAD LT (SEMINAR)	0900-1200
AUTOCAD (WORKSHOP)	1400-1700
26 OCTOBER 2007	FRIDAY
AUTOCAD LT (SEMINAR)	0900-1200
CIVIL 3D (SEMINAR)	0900-1200
AUTOCAD (WORKSHOP)	1400-1700
MAP 3D (SEMINAR)	1400-1700

WHAT: Autodesk Solutions Seminar/Workshop

VENUE: Innocom Technologies Pte Ltd

ADDRESS: 18 Kaki Bukit Road 3, #04-09/10, Lift No. 9
or 10 Entrepreneur Business Centre, Singapore 415978

CONTACT: Jane at 6749-5022; Lynn at 8288-1402

EMAIL: jane@innocom.com.sg; lynn@innocom.com.sg

Disclaimer: The information contained in this email including any attachments, may contain confidential information on Innocom Technologies Pte Ltd and Innocom Consultants Pte. Ltd. This email is intended for the use of the addressee/s listed above. Unauthorized review, dissemination, or any other use of the information contained in this email is strictly prohibited. If you have received this email in error or have reason to believe that you are not authorized to receive it, please notify the sender by return e-mail and promptly delete this email. Thank You.

ARE YOU READY FOR THE NEW 2008 RELEASE? SEE OVER LEAF...

*“You make us to be more perfect
to serve you better.”-motto*



LET'S GET TO KNOW 3DS MAX9



64-bit Release for Windows

3ds Max 9 marks the first full release of 3ds Max software with both 32-bit (Windows®) and 64-bit (Windows®) executables. It enables you to address considerably more memory than you could in the past, allowing you to handle larger and more complex scenes than ever before.

Easily Render Realistic Scenes

mental ray 3.5 adds powerful rendering functionality to 3ds Max 9. Create photorealistic skies based on the position of the sun with Physical Sun and Sky mental ray shader. New Architectural and Design shaders make it easier for designers and architects to create effects such as blurred reflections, frosted glass, and glossy car paint. The ability to create bump mapping on glossiness only and to simulate round corners and soft edges makes objects appear even more natural and true to life.

mental ray 3.5 Core

mental ray 3.5 adds a simplified user interface for working with Final Gather. It also has a unified indirect lighting model that provides consistent results when switching between different 3ds Max radiosity modes.

Performance Optimizations

Core performance enhancements have been made to 3ds Max 9 to maximize your productivity and accelerate your creative workflow. For example, enjoy greater viewport interactivity when working with dense meshes and the ability to switch between high-res and low-res bitmap proxies to allow for faster interaction.

Layered Animation

The ability to place animation into separate layers allows you to easily tweak dense and complex animations. Layers can be turned on or off to evaluate an animation,

can blend new keys with existing motion, and can allow for a full range of adjustments without having to modify the key frames of the animated object.

Character Animation Workflow Improvements

Craft and refine your character animation more easily with numerous enhancements to Biped functionality. For example, you can now move keys past each other and work in negative frames. This saves steps when tweaking a Biped animation and is particularly useful when trying to reverse an animation, since one can now negatively scale an animation range.

ProBooleans

ProBooleans is a new tool for modeling with Boolean operations allowing you to quickly and easily model inorganic shapes—useful for prototyping geometry, creating game level layout designs, and complex architectural elements. Merge, intersect, subtract, or add meshes to create rich and complex objects. ProBooleans re-evaluates the topology to remove bad triangles, allowing you to create higher-quality meshes with fewer small edges and skinny triangles.

Hair and Cloth Improvements

Easily work with Cloth and Hair in 3ds Max 9. Create, manipulate, and style hair directly in the viewports using standard navigation and selection tools. As of 3ds Max 9, you can cinch waistlines, shorten hems, and tailor clothing in the stack without the need to edit the original pattern to make clothes fit.

XRef Object Enhancements

Many enhancements have been made to XRefs in 3ds Max 9. You can now reference scene geometry, materials, and controllers and can maintain dependencies between XRef'd items. The XRef system's new dependency handling lets you preview object relationships in both merge and XRef operations, providing more control over how external objects are used.

Enhanced FBX Support

The Autodesk® FBX® 3D authoring and interchange format allows you to exchange assets between 3D applications. Enhancements in FBX include improvements to mesh compatibility, pixel accuracy when transferring assets and data between 3ds Max, Maya and

FOR MORE INFORMATION OR QUOTATION REQUESTS, CONTACT:

OFFICE: 6749 5022 / 6749 5822

ALEX: alex@innocom.com.sg / **JOSEPH:** joseph@innocom.com.sg

BINGSI: bingsi@innocom.com.sg / **TANY:** tany@innocom.com.sg

Disclaimer: The information contained in this email including any attachments, may contain confidential information on Innocom Technologies Pte Ltd and Innocom Consultants Pte. Ltd. This email is intended for the use of the addressee/s listed above. Unauthorized review, dissemination, or any other use of the information contained in this email is strictly prohibited. If you have received this email in error or have reason to believe that you are not authorized to receive it, please notify the sender by return e-mail and promptly delete this email. Thank You.

ARE YOU READY FOR THE NEW 2008 RELEASE? SEE OVER LEAF...